



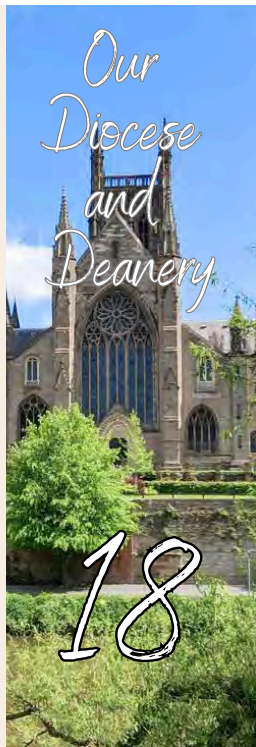
## Parish Profile



Great Malvern Priory



# Contents



# Welcome!

## 'Thank you for your interest in Great Malvern Priory'

We've been welcoming all for over 900 years, and we're prayerfully looking forward to welcoming our next Vicar to lead us in prayer, mission and worship.

This Parish Profile aims to give you an idea of who we are and who we would like to be, to help you to discern if God is calling you to this prayerful, living church here at the Priory. But it can only ever be a snapshot. Malvern Priory is an incredibly busy and happy place; you'll often hear laughter within its ancient walls. If you'd like to see what's happening right now at the Priory, take a look at our website, [greatmalvernpriory.org.uk](http://greatmalvernpriory.org.uk), especially the blog which is at the bottom of the home page.

We believe the Priory's a very special expression of God's love, here in the beautiful setting of Malvern in Worcestershire. But we don't want to keep God's love to ourselves. We want a Vicar who loves people, who'll share the Good News of Jesus with all who already know the Priory and those we're yet to meet. We want to be taught and led and to thrive and grow together as disciples.

When Aldwyn founded the Priory in 1085, it was a Benedictine House, following the Rule of St. Benedict. Benedict's Rule begins with the word 'Listen'.

So we ask you, too, to 'Listen'... is God calling *you* to Great Malvern Priory?

God bless

*David and Neil*

Churchwardens  
and the PCC and congregation of Great Malvern Priory



Scan here  
to link to our  
website







# Worship



Great Malvern Priory

*All welcome*

## Services

**8am**

**Holy Communion  
(Book of Common Prayer) every Sunday**

**10.30am**

**Holy Communion - 1st 3rd 5th Sundays  
Altogether Worship - 2nd Sunday  
Morning Worship - 4th Sunday**

**6.30pm**

**The Gathering - Café Church - 1st Sunday  
Holy Communion - 2nd Sunday  
Evening Worship (Choir led) 3rd 4th 5th Sundays**

**9am**

**Morning Prayer Monday - Saturday**

**11.30am**

**Holy Communion  
(Book of Common Prayer) every Wednesday**

01684 561020

[office@greatmalvernpriory.org.uk](mailto:office@greatmalvernpriory.org.uk)  
[greatmalvernpriory.org.uk](http://greatmalvernpriory.org.uk)





## 'We're Open Evangelical, with a Choral Tradition'

Many people find their worshipping home at the Priory - our average weekly attendance at all services is 220.

We offer a wide range of worship styles and this is very important to us. From weekly said BCP Holy Communion at 8am on Sundays and 11.30am on Wednesdays, through the monthly cycle of Sunday morning services using liturgy from Common Worship and BCP evening worship, to relaxed discussion-style Café Church at The Gathering. Three times each year a holy communion Service of Healing and Wholeness is held at 6.30pm where prayers are said with people who have additional prayer needs.

We value our musical traditions, which are wide-ranging. There are two robed choirs. The Priory Choir sings at three morning services each month, with Junior Choristers singing the top line. In the evening the Priory Singers lead worship for three services (Choral Evensong, Evensong, Evening Communion) each month, where sopranos sing the top line. The Praise Group, Worship Band and Orchestra also lead congregational singing at morning services. At The Gathering the music is led by the Worship Band.

Typical weekly numbers at Sunday services	and on Wednesday
8am 30-40 aged 18+	11.30am 15-25 aged 18+
10.30am 130-200 aged 18+; 18 under 18s	
6.30pm 40-50 aged 18+	

At festivals and on civic occasions, we hold additional services as well as hosting worship for local schools. During Advent and Holy Week there is sung Compline, led by the lower voices of the Priory Singers, with a reflection. The Christingle Services on 23rd and 24th December, which are simultaneously lively and reflective, are ticketed for safety, due to their popularity. In 2023 we welcomed 920 to Priory Christingles, of which 200 were under 18. On Ascension Day, there's a morning tower-top service and the Pets' Blessing Service, held in October, welcomes a different congregation - both human and animal - and is growing in popularity. Remembrancetide brings the Civic Service with members of the Town Council and uniformed organisations and the Priory's own Service of Thanksgiving and Remembrance.

## Children and Young People

are welcome at *all* our services and Altogether Worship is our informal monthly family service. Children's Groups - FROGS (under 11s) average 4, and Identity (11+), average 10, run in term time on 1st, 3rd and 4th Sundays.

Messy Church is held 8 times each year, with a growing congregation ranging from 12-46 children and 12-24 adults, supported by up to 26 volunteers. Usual attendance is 15-20 children. The largest event is the annual Light Party at Hallowe'en.

Lifepath, a day of exploration of faith through the history of the Priory for children in KS2, is held once a year for a week in June. Priory volunteers work with friends from other churches to welcome around 600 children.

## Occasional Offices

Baptisms, usually held during Altogether Worship - 11 in 2023; 3 in 2019  
Weddings - 9 in 2023; 5 in 2019  
Funerals and Memorial Services in the Priory - 9 in 2023; 14 in 2019  
elsewhere - 3 in 2023; 5 in 2019







# Our vision





## **'We published our Vision and Strategy for 2021-2025 during the Covid pandemic'**

...and that vision is still true today - that Great Malvern Priory, through its heritage, Christian witness and community support, will inspire more people to know the love of God, be refreshed in body, restored in mind and excited by the Holy Spirit.

We're aiming to turn our vision into reality through five strategic objectives - worship, heritage, community engagement, Christian responsibilities and resilience.

### **Worship**

Our range of opportunities for corporate worship, prayer and Christian teaching will inspire growth in church belonging, service and discipleship and foster a deeper sense of spirituality across all ages. We will work together with local churches to promote the Good News of Jesus.

### **Heritage**

Through the Priory Development Plan we will actively pursue our programme of work to enhance the building sympathetically and sustainably, to meet modern-day needs, standards and expectations, and make its heritage more accessible to all.

### **Community engagement**

We'll work closely with our local community, welcoming visitors and all who come to the Priory, promoting activities which encourage discovery, learning, spiritual wellbeing and personal growth.

### **Christian responsibilities**

We aim to live out our Christian responsibilities to others by making a difference for those in need locally and supporting others further afield through our Mission Partners.

### **Resilience**

We'll ensure a sustainable future for the Priory, building financial stability, widening opportunities for participation in the life of the church, creating long term resilience. The Covid pandemic has had a serious, persistent negative effect on the numbers of young families and children coming to church services and children's groups. We'll have to work hard to reach out to them and welcome them back into the Priory family.

***Our prayer and vision is that our new vicar will be inspired to lead us to grow in faith, to grow in number, and to grow younger.***





Is God calling you to the Priory?

Parish Profile



Great Malvern Priory



## **'We're praying for our next Vicar'**

Everyone's had a chance to share their thoughts on who should lead our vibrant, living church. From the PCC Away Day session, to Home Groups and individuals who worship at the Priory, the response has been remarkably consistent.

We're praying for someone...

- who loves and cares for *all* God's people
- who'll lead us in prayer and worship
- who'll teach us and guide us as disciples
- who, from a deep personal faith, will help us to reach out and share the Good News of Jesus in our community and beyond

Why did these attributes come up over and over again?

It's because we recognise that we need to grow. We need to grow individually, and also as a church community.

The Priory congregations have rebuilt following the Covid-19 pandemic, but they're different. Before the pandemic we had thriving youth and toddler groups. After Covid, quite simply, those age groups did not return. We're now a congregation of older folk. Very dedicated and committed, but nonetheless we recognise that we need to attract younger people into the Priory community. We have the foundations with a handful of families, but we'd love our new Vicar to have the skill and vision to help us build, to break down the unseen barriers, to close the age gap, and grow younger.

We need a Vicar with the ability and enthusiasm to support the progress of our National Lottery Heritage Fund (NLHF) application to realise the next stages of the Priory Development Plan (PDP).

We pray that the Priory can take its Jesus-shaped place at the heart of Great Malvern's community, by working with other organisations, and we pray for a Vicar who will lead us and guide us in this important ministry.

We love to learn. Bible-based courses, such as the Romans Course, and the Alpha course inspire us and are very well attended. We have thriving Home Groups and Fellowship Worship and Prayer (the Priory prayer group) meets each month. Inspiring sermons open the word for us and motivate us. We pray that our Vicar will teach us how to be better disciples, so that we are confident to share the Good News.

Above all we're praying for someone with a pastoral heart, who'll make *everyone* feel welcome as part of God's Priory Family.

***Pastoral...missional...a prayerful teacher... is God calling you to the Priory?***





# Some of the congregation's hopes and wishes for our new Vicar

'I'd like to have a Vicar who...

relates well to all ages and has a vision for welcoming and integrating more children and young people into the church family

will be keen to broaden the diversity of worship while valuing the traditional choral approach

has vision and wisdom to take us forward with the Priory Development Plan

through clear and relevant bible teaching  
(i) will inspire and encourage us in our relationship with Jesus  
(ii) will help those who have not yet found faith to find Jesus

“ will encourage us to use our gifts as part of the church body ”

has a prayerful, empathetic pastoral ministry to those facing difficulties

- is a person of faith and prayer
- communicates Jesus to all ages whether committed in faith or not yet having found faith
- is able to exercise an empathetic pastoral ministry to all who are troubled, and enable participation in that ministry
- can embrace the wide spectrum of styles of worship in our congregation
- and embrace the variety and strength of our musical tradition
- supports the Priory Development Plan
- supports civic and community participation
- might lead us towards closer links with other churches in the Deanery and locally

• is a clear, thoughtful and engaging communicator with in-depth Bible knowledge and who has a clear and evident faith in the Gospel

- sees youth and children's work as an urgent and vital priority for our present and future
- is willing to delegate and to encourage the talents of the whole congregation - the priesthood of all believers

has a sense of humour

We shall be falling off our perches over time and of children and young people there are few. I'd like a Vicar who can help us reach young people

is pastoral, visionary, willing to take risks

- is enthusiastic and inspiring
- who will prioritise the love and pastoral care for Priory people together with people in the wider community.

- who can communicate their faith and love of God to all ages





Piers - Director of Music



Dylan - Custos

||

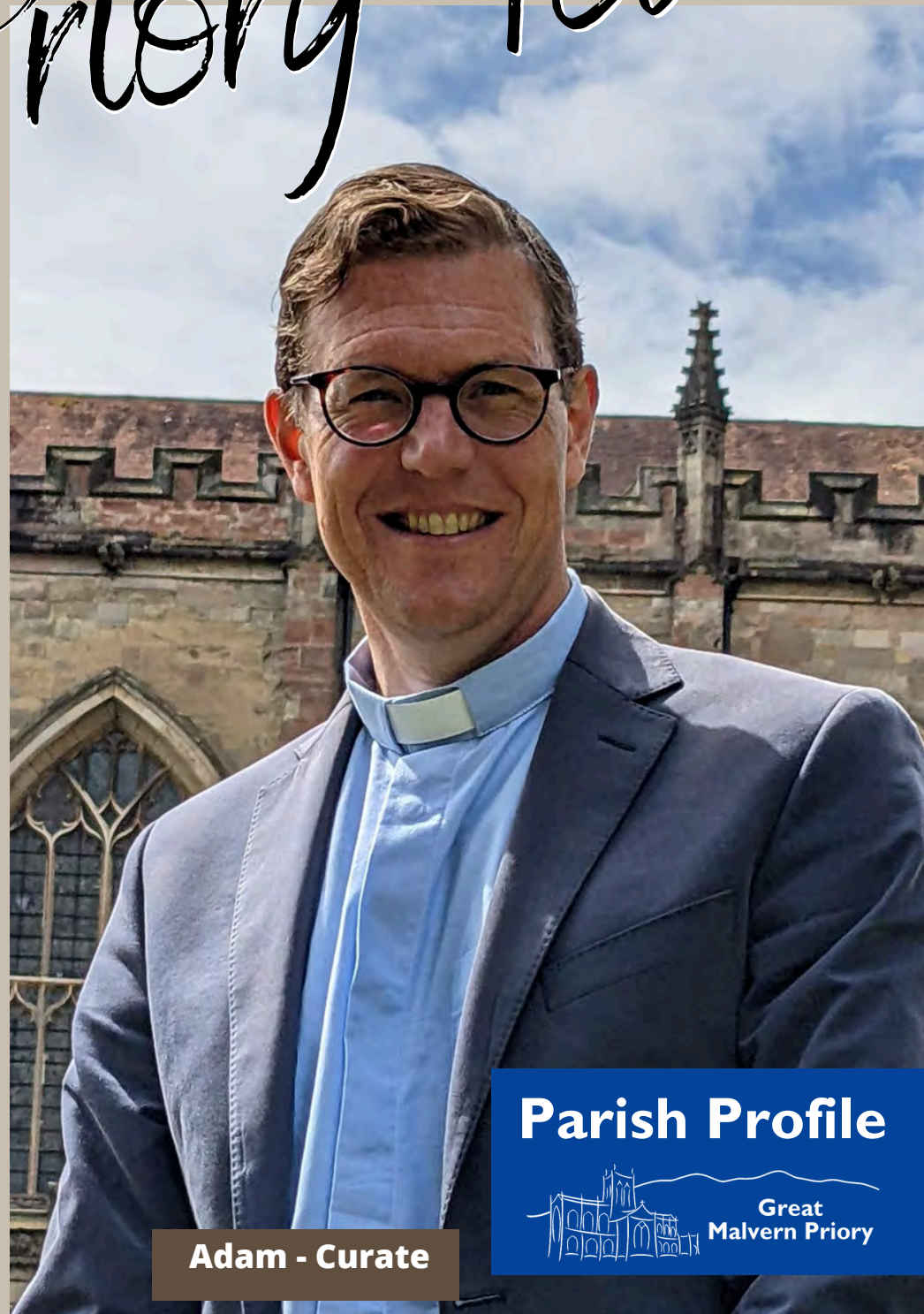


# The Priory Team

Operations Manager  
to be appointed



Rob - Assistant Custos



Adam - Curate



Catherine -  
Parish Administrator

Parish Profile



Great  
Malvern Priory



**‘We’re blessed by the people, both paid and volunteers, at the Priory ’**

## **Clergy, LLMs and those in training**

**Adam**’s our curate. He was priested in 2023 and is shortly to become Chaplain at Malvern College, where he is also a teacher of Religious Studies.

Eight retired clergy with **Permission to Officiate** minister in the Priory. We are also blessed by a talented group of LLMs - **David, Richard, Sue** and **Chris. Claire** has just completed her first year’s training for LLM at the Queen’s Foundation in Birmingham. **Gilly** was ordained deacon at Petertide and is serving her curacy in Worcester City West Team. **Philippa** has also completed her first year of formation for the priesthood at Queen’s.

## **Priory staff**

Our full-time **Operations Manager** is being recruited as this Parish Profile is prepared. It’s a new role, building on that of our recent Church Manager. The Operations Manager will be ensuring the efficient day-to-day running of the Priory and engaging with and supporting the work involved in the Priory Development Plan application to the NLHF.

**Catherine** is our part-time Parish Administrator. She works Tuesday - Friday 9am - 1pm in the Parish Office, which is in Church House, in the Priory grounds. On Thursdays and Fridays the Parish Office is open for visitors to drop in.

**Dylan** is the Priory Custos (Head Verger) and works full-time. He’s responsible for the operation of the Priory Church building and is supported by **Rob** our Deputy Custos and a team of volunteer and paid assistants.

**Piers**, our Director of Music and Organist, trains the Priory Choirs. He’s supported by **Andrew** and **Michael** as Assistant Organists and supervises the training of Organ Scholars.

Our Mission Accompanier, **Alan**, is helping us develop strategies for children and youth work. He’s a consultant coach and is part of the Diocesan Mission Accompanier programme, which is funded by the national church.

**The PCC** has a very efficient structure. There are currently 24 members. All belong to one or more of the five PCC Committees - Buildings and Grounds, Priory Development Plan, Mission, Worship, and Finance. The Mission and Worship Committees oversee 14 Groups, who work to support different aspects of Priory life. These include Prayer Ministry, Communications, PALs (Pastoral Support network), Environment, Tower Bellringers, Mothers’ Union and Flower Arranging . A small **Management Team** meets regularly, with the Operations Manager, to deal with the day-to-day running of the Priory.

The **Friends of Malvern Priory** is an independent charity which promotes the understanding and appreciation of the Priory. The Friends raises funds to support the fabric of the church and its musical tradition. Their volunteers run the Guided Tours. **Anne** is the Chairman of the Friends.

The Friends also runs the Priory Shop, headed up by **Leigh** (who’s a volunteer) and her team of volunteer shop staff. Other Friends’ activities include the annual Friends’ Evensong, the annual Heritage and Faith Lecture, and the hugely popular Priory Lunch Box talks and concerts, which are run jointly with the Priory to reach out to the wider community.







# Priory Development Plan

**Parish Profile**



Great Malvern Priory



## **‘Restoring and rejuvenating our historic building so it’s accessible to all..’**

If you look on Trip Advisor, you’ll find that the Priory is the second most popular place in Malvern, after our iconic Hills.

But we recognise it could be so much better for everyone - our congregations, our 40,000+ visitors each year and our community. The two loos are rather *basic* and aren’t disabled-friendly; we have no kitchen facilities other than a sink, an urn and a ‘can do’ attitude. Then there’s the restoration and conservation of the historic fabric, including the largest collection of English medieval stained glass in any parish church in the country, and the lead roofs are coming to the end of their useful life.

We want to bring the Priory to life for everyone, through the interpretation of its 939 year history from Benedictine Priory to the living church of today. We want to clear away the haphazard clutter of vestries which has accreted over the years, obscuring the heritage, and move what happens in them into a new, welcoming, Heritage Access Building near the north porch. We want to conserve the medieval glass, level the floor, improve our facilities, reduce our carbon footprint, restore the stonework ... it goes on.

The phased project is estimated to cost a total of £17 million.

It might seem daunting, but we’ve already achieved a huge amount. All the photos show work that is now completed.

In 2022-3 the first of the 14 medieval stained glass windows was conserved and the lead roof over St Anne’s Chapel was replaced, both with major financial support from The Friends of Malvern Priory.

This year, donations, legacies, grants and fundraising through many in-house events and activities, have allowed us to level the Nave floor and install underfloor heating, removing the hazardous 4 inch high pew plinths left after the Victorian restoration. During that work the congregations moved. The 8am BCP Holy Communion squeezed into St Giles’ Chapel and the 10.30am congregation moved to Malvern College Chapel. Thanks to Malvern College we were able to carry on worshipping together; the same, but differently.

The PCC PDP Steering Committee, a group of dedicated volunteers with a wide range of skills, supported by a consultant, successfully submitted an Expression of Interest to the NLHF in June 2024, for the first phase of the PDP, which includes the new Heritage Access Building. As the NLHF application progresses, we can expect to employ additional staff to assist with fundraising, project management, activity planning and admin support, as well as the contractors who will carry out the work. It’ll be a busy time.

The PDP gives us the opportunity to build the Priory’s relationship with local organisations. We’d love our next Vicar to help us as we continue to reach out, meeting and exploring partnerships and creative opportunities with organisations ranging from Malvern Hills District Council to Malvern Theatres, Malvern Cube Youth to Malvern Science Park, and many, many others.





Here's the Priory from the Hills



Our

Parish



# Parish Profile



Great Malvern Priory

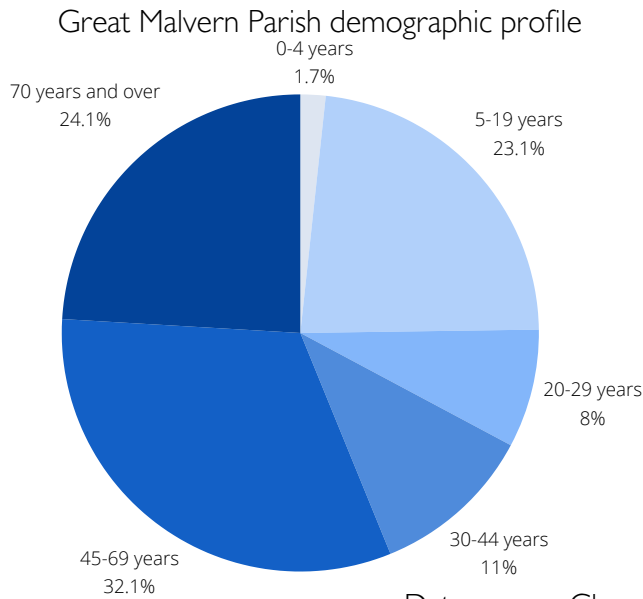
Easter morning service on the Worcestershire Beacon



## ‘We’re a gathered congregation’

The Parish Church of St Mary and St Michael, Great Malvern (or just ‘The Priory’ to almost everyone) lies within the heart of the Parish of Great Malvern.

It’s a small parish, covering an area of 0.9 square miles. The population is around 2,600 people, living in about 1,180 households. Properties in the parish tend to fall into two types, either large, detached homes or apartments. Over 90% of the population is white, 48% describe themselves as Christian and 41% as having no religion. The demographic data is as follows



Data source: Church of England Data Services team

Our parish is ranked at 9,963 on the Church of England deprivation scale, where 1 is the most deprived and 12,239 is the least deprived. Some two thirds of Priory members reside outside the parish, 20% living outside Malvern altogether.

The Electoral Roll stood at 314 in 2023 and 312 in 2019.

## The Church and Churchyard

The Priory is the chapel of an 11th century Benedictine monastery. As a church we are a member of the Major Churches Network. We host civic services and services for local schools. As a focal point for the area, we are the venue for many community events including concerts, organ recitals and exhibitions, with regular farmers’ and arts & crafts markets in the churchyard. We’re working to become more eco-aware and have so far achieved the Eco Church Bronze Award.

We have an active link with St Katharina’s, Wolmirstedt, in Germany, with exchange trips between our two churches. Have a look at the [blog post](#) from last summer’s visit to Germany.

Our church is open every day for visitors and for worship, overseen by the Custos team, with volunteer welcomers and volunteers in the shop.





We're fortunate to have 'Church House', in the churchyard, which is home to the Parish Office, the Operations Manager's office and two small meeting rooms, plus a small kitchen and toilets.

The Lyttelton Rooms stand at the entrance to the churchyard. Once the Priory Church Rooms and before that a school, they are now leased to the Lyttelton Well Ltd, an ecumenical Christian organisation, of which the Priory is a member, providing a counselling service and running a café and bookshop in the adjacent Lyttelton Well building. The Priory pays to use the Lyttelton Rooms, whose upkeep is the responsibility of the Lyttelton Well Ltd.

## Financial information

Total General Income in 2023 was just over £340,000 (£355,000 in 2022).

The reduction in income was largely due to a drop in facility fees and general donations.

Around two thirds of general income comes from Stewardship and reclaimed Gift Aid, with 160 members of the congregation belonging to our Planned Giving Scheme.

Total restricted income in 2023 was £217,000 (£175,000 in 2022).

The increase was largely due to grants from The Friends of Malvern Priory and from charitable trusts for the conservation of one medieval window and repairs to St Anne's chapel roof.

The Friends has given over £160,000 in grants over the last two years.

Total General Expenditure in 2023 was £337,000 (almost unchanged from 2022).

Increasing our regular giving is always a challenge, but one-off appeals are usually very well supported.

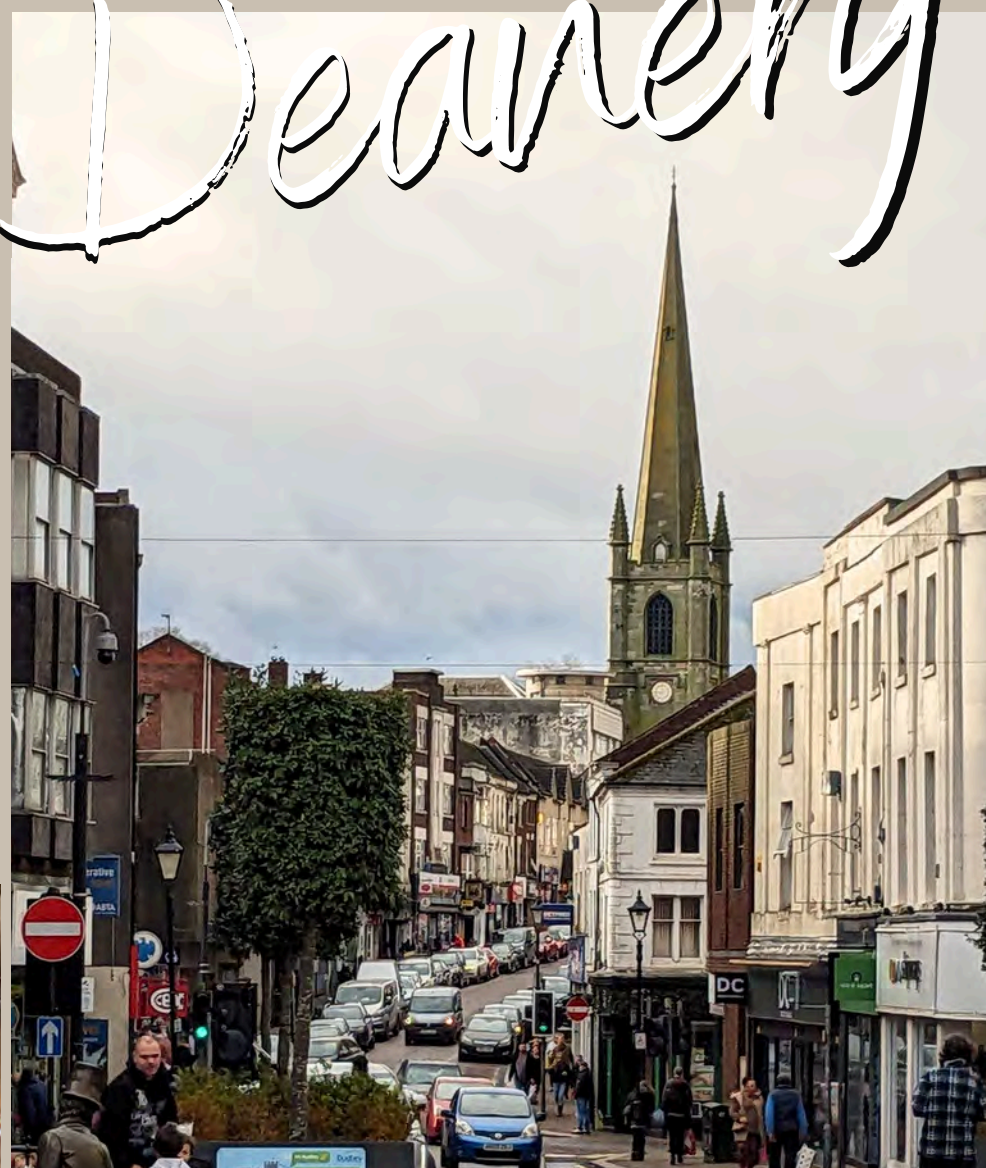
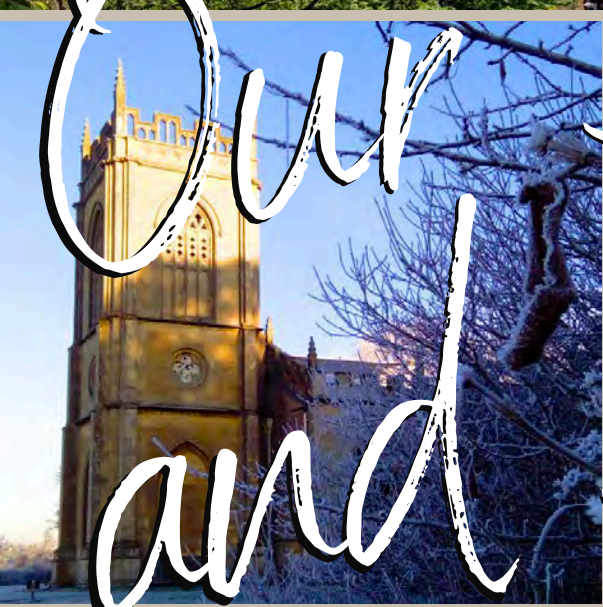
In 2023 we were able to pay our requested diocesan Ministry (Parish) Share in full (£73,500).

As a parish, we continue to give 10% of our Stewardship Income to support our external Mission Partners.

At the end of 2023 we had a total of just over £700,000 in our Funds. However, there will be significant expenditure in 2024 on the Nave Floor Project and preparatory work for our bid for a Lottery grant for the Priory Development Plan.



# Our Diocese and Deanery



**Parish Profile**

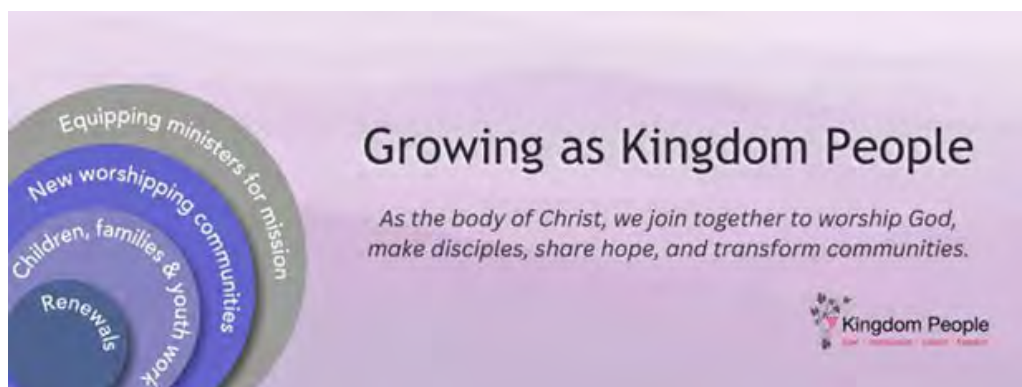


Great Malvern Priory



## ‘The Diocese of Worcester covers an area of 671 square miles’

It includes parishes in Worcestershire, the Metropolitan Borough of Dudley, and a few parishes in northern Gloucestershire, south-east Wolverhampton and Sandwell. It has around 170 parishes and 280 church buildings, together with 100 church schools. The diocese is divided into two archdeaconries, with six deaneries.



Our diocesan vision is to grow as kingdom people, sharing the good news of Jesus' love in Worcestershire and Dudley. As the body of Christ, we join together to worship God creatively, make disciples, share hope, and transform communities as we live out values of love, compassion, justice and freedom to bring about the kingdom of God on earth.

### Priorities 2023-2030

Over the next few years we aim to:

- **Double** the number of children and young people worshipping in our churches.
- **Create 100 new worshipping communities** offering a range of ways for people to come to faith and worship God, e.g. Forest Church, Café Church, Walking Church.
- **Invest in the renewal** of around a dozen churches to ensure that each major area of population has at least one church with 150 people attending weekly, enabling them to support other local churches.
- Underpin these by investing in our clergy and lay leaders, providing **training and development** opportunities to enable them to grow and feel supported and equipped for mission.

Here's a summary of [our priorities](#) along with the different ways parishes can get involved ... and here's our full diocesan [transformation strategy](#).

One size doesn't fit all - we want to strengthen local churches and encourage and resource them to explore what it might mean to grow in health and sustainability in their context as they worship God, make disciples, share hope, and transform communities.

We share a vision for a church which enables its people to be:

- Deeply rooted in prayer and study of the scriptures.
- Renewed and transformed by regular worship.
- Equipped to witness to the gospel of love, compassion, justice and freedom.
- Dedicated to helping children, young people and young adults to belong and be nurtured in faith.
- Devoted to growing deeply in discipleship, offering our time and talents and money to God.
- Resourced and released to minister to others.
- Committed to making our buildings fit for purpose as a spiritual and community resource.



## 'Time for some blue sky thinking?'



### Introducing the Malvern and Upton Deanery

We're one of the 6 deaneries of the Diocese of Worcester. We have a mandate to transform the life of our churches in line with the diocesan priorities as we relate to the missional and ministry needs of our geographical and missional areas.

### The Deanery area and its churches

The deanery is contained by 2 great rivers, the M5/M50/A38 and the majestic Malvern Hills. As well as two tourist towns, Great Malvern and Upton on Severn, the deanery is an eclectic mix of expanding new housing and quaint rural villages, farmland and agri-economy, tourist attractions, places for concerts and places for festivals, walking trails, traveller sites and a few stately homes.

We have churches straddling the hills and we have churches that endure river floods. We have tourist hotspots and commuter dormitories. The deanery includes some of the poorest areas in the county and some of the most exclusive. There is a myriad of schools (state and independent), and many care homes to watch over. There are strong people and vulnerable people in our midst.

We have vibrant ecumenical *Churches Together in Malvern*, and there is great potential for better ecumenical links in Upton. It feels like we have churches everywhere: some at capacity on Sundays and busy during the week, others locked after Sunday worship. Our churches are a beacon for our faith and hope to all. Some, though, are fragile and need support to thrive but all are eager to transform.

How do we function as a deanery?

Working regionally with our archdeacon and diocesan support staff, the deanery is the space in which we work together to develop healthy and sustainable churches collaboratively with our constituent parishes. Under the leadership of our Area Dean, the Revd Gary Crellin and Lay Chair, Maria Toman, and supported by the Deanery Leadership Team, we aim to discern God's strategic direction for mission and ministry in this beautiful part of the world and strive to implement the response.

The Deanery Leadership Team acts as the lynch-pin for drawing in all of our churches - urban, rural, large or small - together so we can navigate the future challenges as one body. We are a *Team of Teams*, which must work together. We provide a safe place for this level of engagement to happen, and for appropriate responses to the challenges ahead to be developed, through research and conversations with individual parishes and benefices. We cannot do this alone - we need to work together and we are beginning that journey utilising a progressive and insightful Deanery Synod and Chapter.

## Parish Profile





### **Our developing strategic direction**

With the presence of a couple of large, gathered churches, alongside churches that are struggling or fragile, the emerging expertise of some churches in delivering particular types of ministries (including tourism, rural mission, ministry to new housing developments, dementia care and older persons' care/home support, an arts church and, of course, greater involvement with children, youth and families) is being galvanised.

We need to work together to develop new ways of working between clergy, lay ministers and laity to meet the demands of running our churches affordably and competently. Although the direction of travel is formative and emergent, we sense the best way forward is to draw our churches into a developing partnership with each other, informally at first, but moving at pace and scale as we explore a variety of group and oversight and collaborative ministry models.

We must free up as much resource (financial and human) as possible to focus on mission and ministry where it is most needed. New ways of working can be explored with flexible deployment of blended lay and ordained ministry, contextual ministry, appropriate training and support that delivers effective mission, and objectively looking to standardise or even centralise supporting services (such as administration, safeguarding, treasury and buildings/churchyard maintenance). Such transformation would release all of us, not a select few, to focus more intentionally on our collective priorities as Kingdom People.

In summary, we aim to operate more smartly, more sustainably and with greater impact than our churches can individually achieve. We need to be brave and work together.

### **And finally...**

We welcome those who are up for change rather than resisting it. Relationally, we want to be collaborative rather than parochial in attitude. We want to work with colleagues who are prepared to offer and share responsibility for the future, whilst being in love with Christ, and the people. He has called us to serve together, as a Team of Teams.

Future success is not just about the parish, it's about the wider church.

Join us in our mission and ministry!



## **Parish Profile**





# Malvern



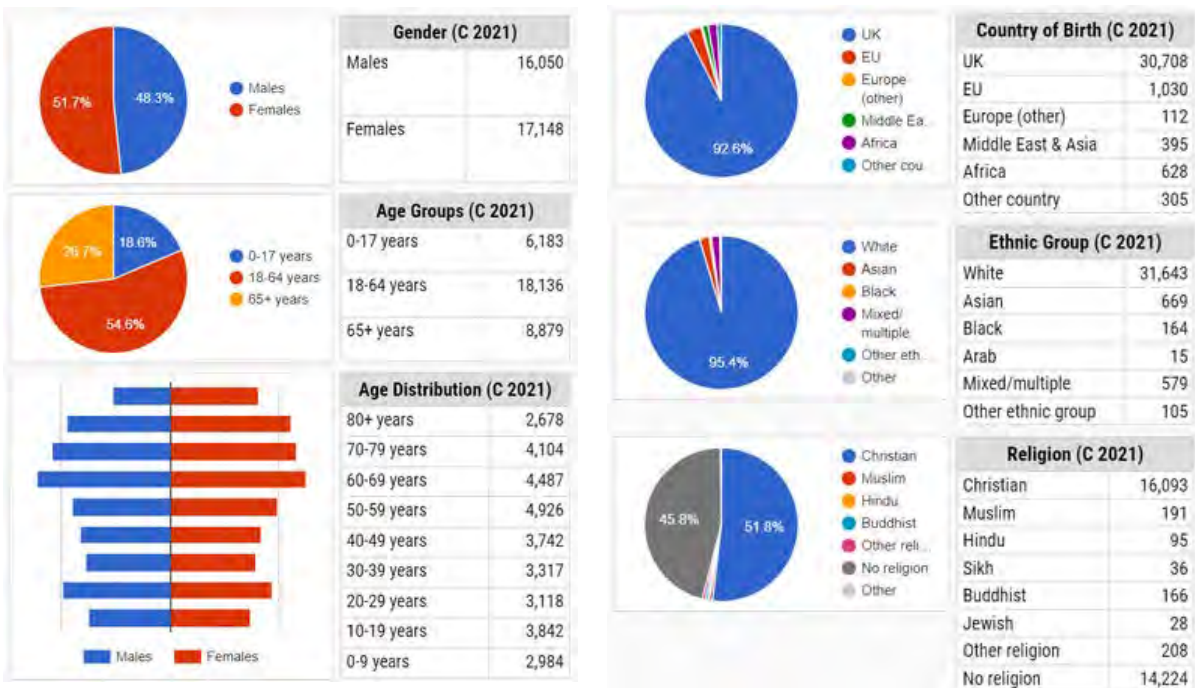


## ‘Malvern’s just a really great place to live’

It’s not only the locals who know that. Malvern’s now home to a large community of Ukrainian families, many from big cities in Ukraine, who love the ‘big enough but not too big’ vibe of Malvern.

Malvern’s really well connected. It’s just 7 miles south-west of the city of Worcester (population 103,000 in 2021) and Birmingham (population 1.145million) is about 45 miles, or an hour away by car. If you want a trip to London, the railway station’s 5 minutes walk from the Vicarage and you’ll be in the capital around 2½ hours later.

In the 2021 census, Malvern had a population of 33,000, which had grown slowly by 2,000 since the 2001 census, mostly through the building of new housing.



The Malvern Hills, which you can reach from the Priory in under 5 minutes’ walk, are a popular destination to enjoy the glory of God’s creation. Whether you’ve got a canine companion or just enjoy a stride or a wander, the views east across to the Cotswolds, north to Shropshire, south to the glittering Severn Estuary or west to the Brecon Beacons, are second to none. Skylarks sing overhead in summer and the sheets of deep blue, fragrant, bluebells in May are amazing.

In Great Malvern, there’s the Splash Leisure Centre with a pool and fitness centre; The Malvern Theatres complex which includes a cinema, theatre and concert hall; Malvern Library, which puts on great activities for children from toddlers upwards; Priory Park, with a truly fabulous new children’s play area and a well-used bandstand; and Malvern Cube Community Centre, which holds activities for all ages, including young people.

For sportspeople, there are clubs from football to bowling, two golf courses nearby, tennis and plenty of gyms. The nearest Parkrun is in Worcester (it’s flat!) There are museums, too - the small, but perfect Malvern Museum, the brand new Technology Station museum which documents Malvern’s critical work in the development of radar in the Second World war and beyond, and the Morgan Experience Centre which showcases Malvern’s iconic car brand.





Malvern has an excellent range of shops, including, Aldi, Lidl, Morrisons and Waitrose. There are artisan bakeries, numerous coffee shops, independent new and second-hand bookshops, good restaurants providing a variety of cuisines, fish and chip shops and a McDonalds! Four Malvern pubs and two Malvern-based breweries appear in Camra's Good Beer Guide. Malvern spring water is freely available from tested springs around the Hills, or bottled, from shops.

Many people are employed in high-tech industries in the Science Park, including manufacturing and cyber security, and the schools and retail businesses are significant employers. It's not unusual to find Malvernians who work from home and commute to London or elsewhere.

There are a number of doctors' surgeries and a Minor Injuries Unit at Malvern Community Hospital.

Malvern is a great place to live and it is generally prosperous. However, there are pockets of significant deprivation, where 1 in 3 households receive means-tested or disability-related benefits. Many members of the Priory support the Trussell Trust's Malvern Hills Foodbank.

The Vicar occasionally comes across situations where there is immediate financial need. Jesus exhorted his disciples to love their neighbour and care for the poor and disadvantaged. We, as a Church wish to follow this example, so there is a small Vicar's Discretionary Fund to help in these circumstances.





Your home

Parish Profile



Great Malvern Priory



## ‘A lovely family home, in a quiet leafy road close to the centre of Malvern’

Just 10 minutes walk (or 3 minutes drive) from the Priory, the Vicarage is a spacious detached 1970s home, which was extensively refurbished and extended in 2018. It's surrounded by easily maintained gardens, with a detached garage and a driveway with space to park at least 3 cars.

Great Malvern railway station is a few minutes' walk away, where regular trains run to London, Birmingham, Hereford and beyond. Malvern town centre is also within easy walking distance (5-7 minutes), with plenty of coffee shops, restaurants, supermarkets including Waitrose, independent shops, Malvern Theatres, Malvern Library, Malvern Cube Community Centre and the Splash Leisure Centre.

The Vicarage is in the catchment for Malvern Parish Church of England Primary School (OFSTED Good 2020) and within easy distance of 11 other primary schools.

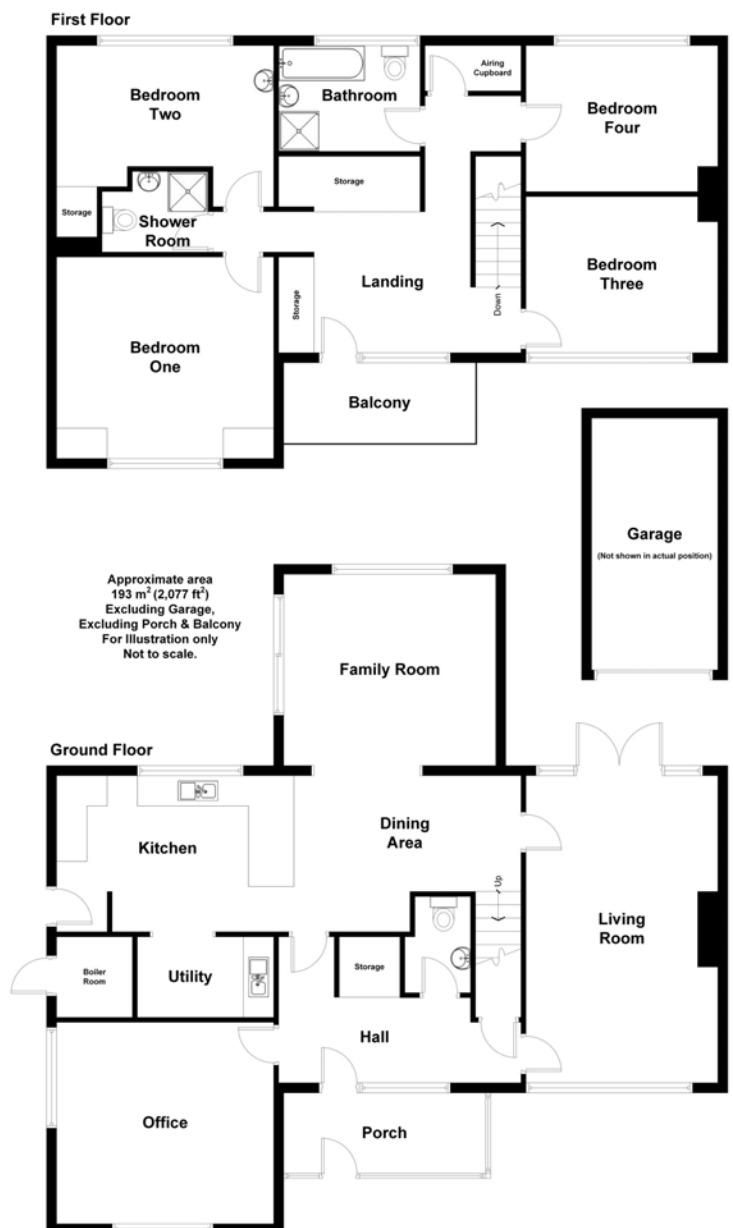
Secondary education is available at The Chase School (OFSTED Good with Outstanding Sixth Form 2021) and Dyson Perrins Church of England Academy (OFSTED Good 2023). Worcester and Hereford both have Sixth Form Colleges. There are also several independent schools for children from nursery age to sixth form in Malvern.

The closest University is in Worcester, and Hereford (40 minutes by train) is home to the renowned College of Arts.

**The Vicarage,  
7, Clarence Road,  
Great Malvern,  
WR14 3EN**

- Study
- Lounge
- Large open plan living /dining/ kitchen area
- Downstairs cloakroom
- Porch
- Balcony
- 3 double bedrooms
- 1 single bedroom
- Large landing
- Family bathroom
- Small shower room
- Garage

### The Vicarage floor plan







Are you called to this

# Living church

**Parish Profile**



Great Malvern Priory